

The Retail at Penn Tower

Great For Food Use: In the Base of a 133 West 30th Street
Fully Leased 500,000 s.f. Office Building 6th and 7th Avenues



Approximate Size:

Ground Floor: 4,800 s.f.

Mezzanine: 1,000 s.f.

Storage: 900 s.f.

Frontage: Approx. 50 Feet

Ceilings: 18 Feet

Rent: Upon Request

Possession: Arranged

Will Consider Divisions

Neighborhood Info:

Macy's, Herald Square, Madison Square Garden, Penn Station, Tourneau, H&M Manhattan Mall, Express, Nine West, Pennsylvania Hotel, Pret-A-Manger etc.

Located 1/2 block from Penn Station at the base of a fully leased 500,000 s.f. office building.

Suitable for any use, including food (must be vented).

Non-contiguous bsmnt has easy access from freight entrance.

For more information, please contact exclusive agents:



212.490.1002

Peter Braus, Ext. 234

Executive Vice President
pbraus@srcny.com

Peter Levitan, Ext. 221

Associate Director
plevitan@srcny.com

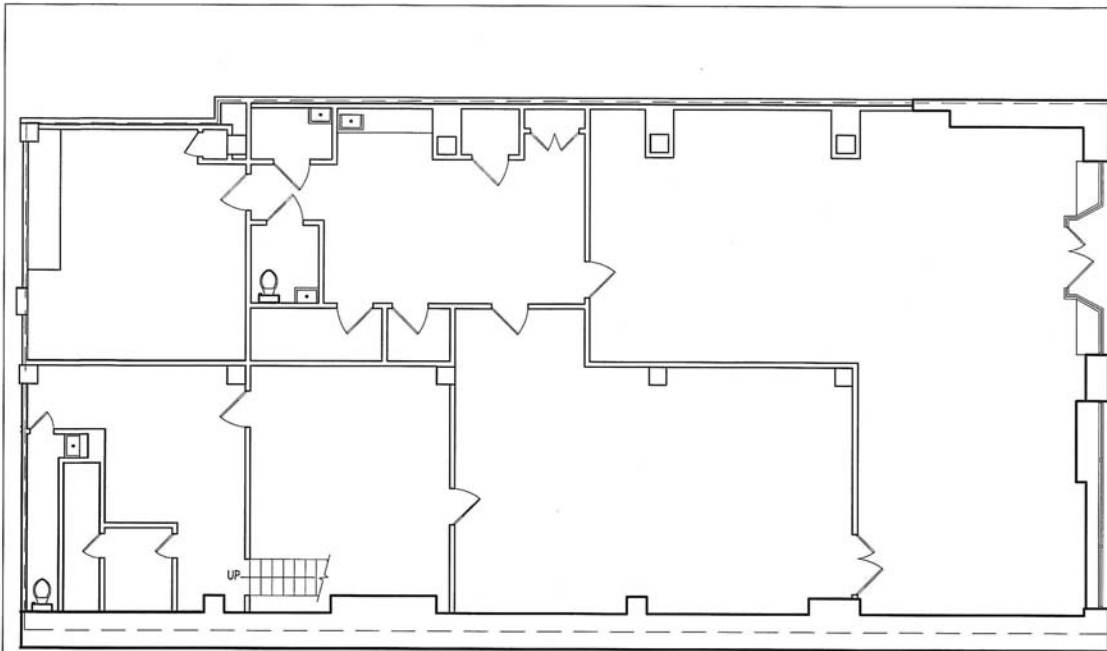
12 East 46th Street, Sixth Floor, New York, NY, 10017 | P 212.490.1002 | F 212.490.0978 | www.srcny.com

All information supplied is from sources reliable and is furnished subject to errors, omissions, modifications, removal of the listing from sale, and to any listing conditions, including the rates and manner of payment of commissions for particular offerings imposed by principals or agreed by this Company, the terms of which are available to principals or duly licensed brokers. Any square footage dimensions set forth are approximate. Co-Broke of one full commission.

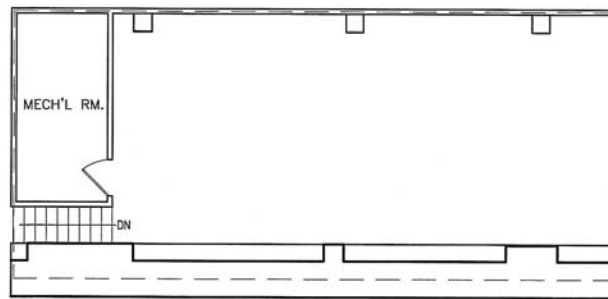
The Retail at Penn Tower

133 West 30th Street

6th and 7th Avenues




FIRST FLOOR



FIRST FLOOR MEZZANINE



 Gerler & Wente ARCHITECTS LLP 145 West 30th Street New York, NY 10001 T 212.273.9888 F 212.273.9889 W gwarch.com	PROJECT	132 W 31st STREET NEW YORK, NY 10001	DATE	11.13.08
	DRAWING	RETAIL SPACE	JOB NUMBER	04050.A18
			DESIGNER	GW
			SCALE	AS SHOWN
				SK01