

As exclusive agent , we offer the following space

PRIME GRAMERY PARK RETAIL LOCATION

236 THIRD AVENUE
(19th-20th Streets)



Store - 300 sq plus 1000 sf basement

Possession—Immediate Term—Long Term

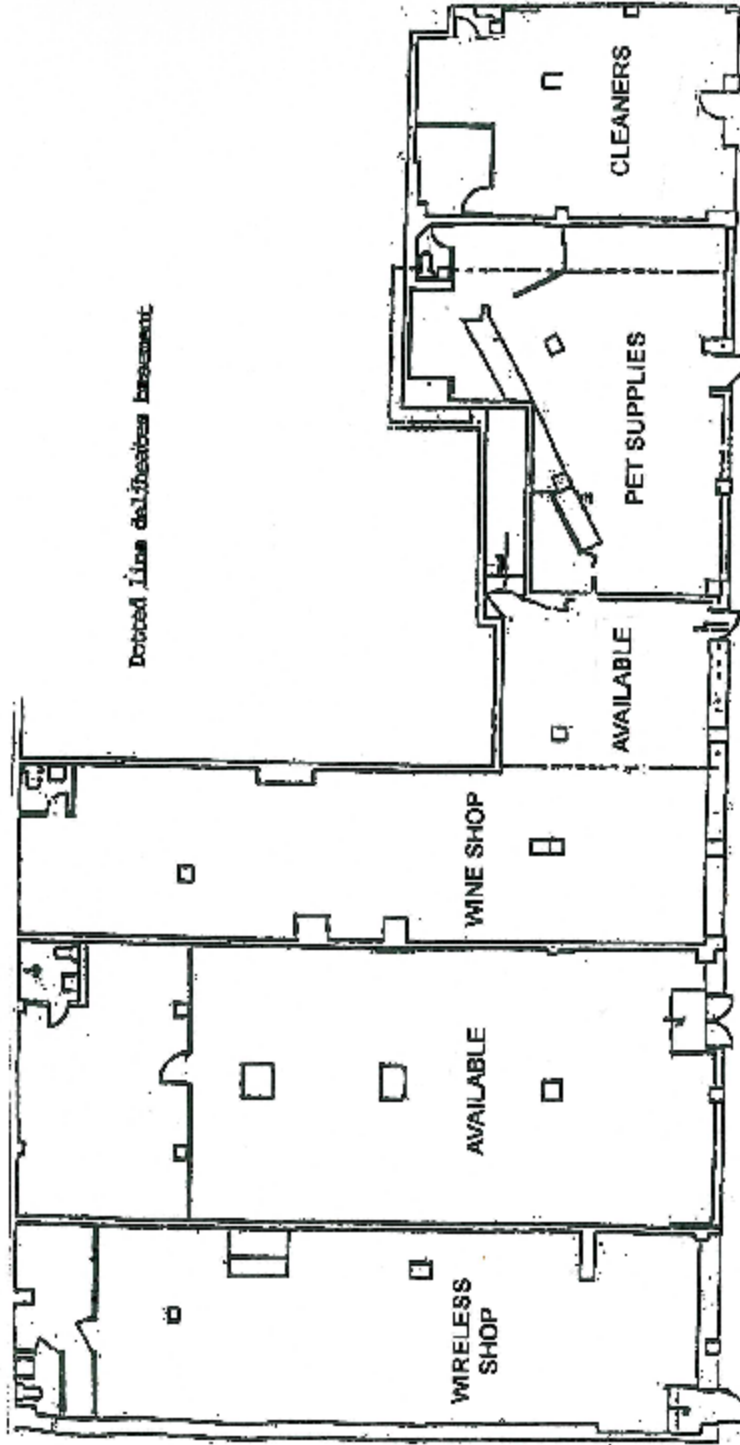
Adjoining retailers include Wireless One, Gramercy Park Wines & Natural Pet s Shop.

In close proximity to Gramercy Park , Beth Israel, Cabrini and the Hospital for Joint Diseases.

SIERRA REALTY

Retail • Office • Residential
Leasing • Ownership • Management • Sales

Barry Sanet , Senior Managing Director
Phone: (212) 490-1002, ext. 223,
Fax: (212) 490-0978
bsanet@srcny.com



Dotted line indicates basement

INDEN AVENUE

230 TO 240 3RD AVENUE
N/A 32 GRAMERCY